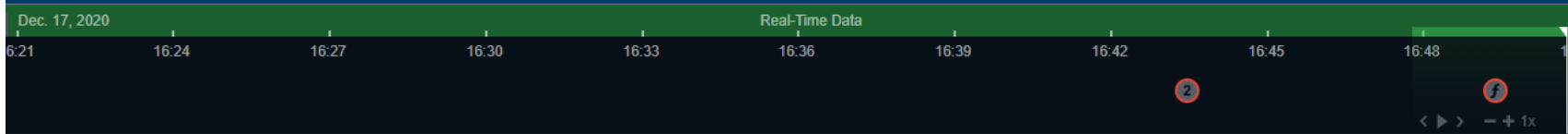




Situational Awareness and Data Analytics

for Grid Operations and Engineering



16:50:47
 12/17/2020
 3m
 Minute Chart Range

User +

Frequency

Angle

Power

General

Oscillation

Voltage

All

Dashboards

System > Overview

Blackstart Path

Fire Watch

Notifications

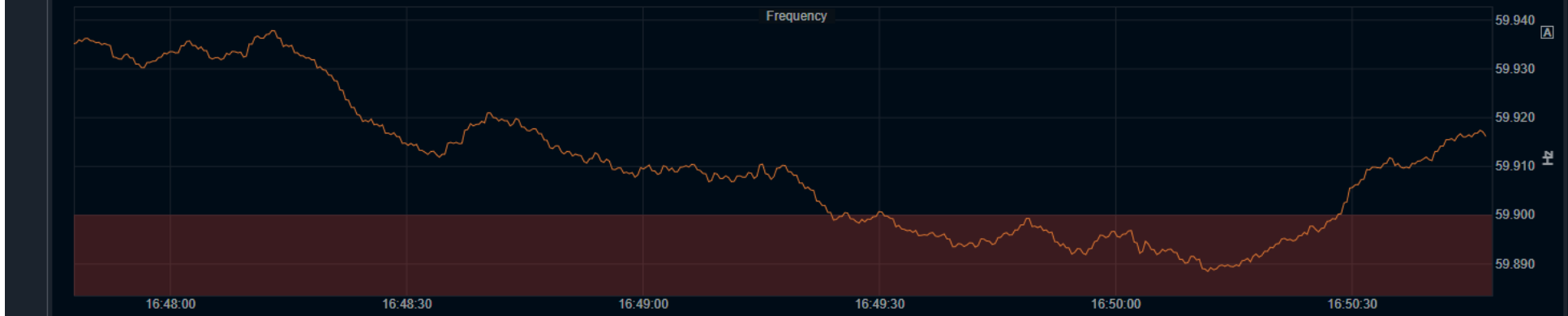
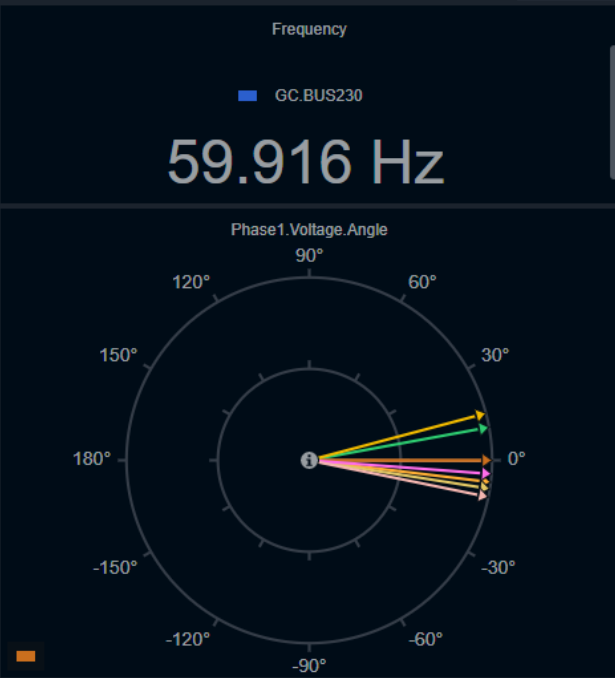
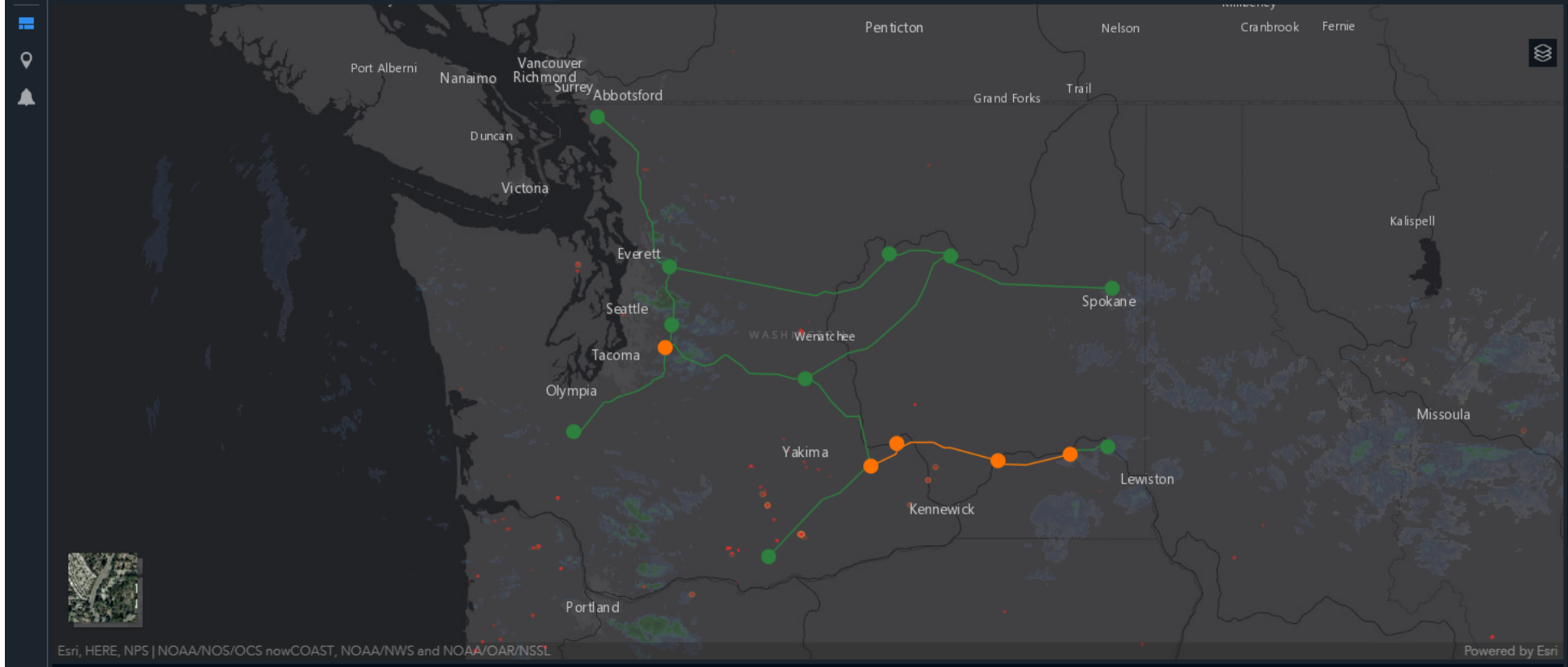
One-Line Diagram

Phase Angle

System MVA

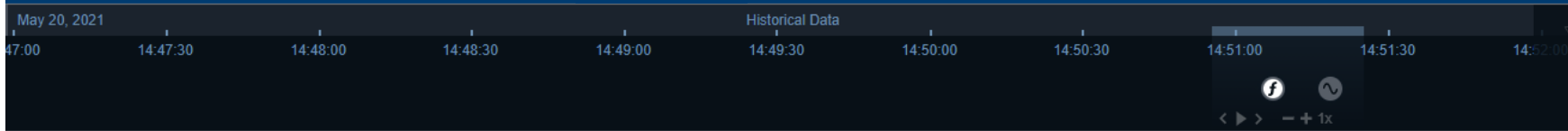
System Voltage

+ Panel



LL.Voltage.Magnitude

231.038 kV	<div style="width: 80%;"></div>
230.783 kV	<div style="width: 75%;"></div>
232.006 kV	<div style="width: 85%;"></div>
231.064 kV	<div style="width: 78%;"></div>
230.388 kV	<div style="width: 72%;"></div>
230.319 kV	<div style="width: 70%;"></div>
232.235 kV	<div style="width: 88%;"></div>
231.001 kV	<div style="width: 76%;"></div>
231.494 kV	<div style="width: 82%;"></div>



Historical Data 👤 User + f Frequency ↻ Angle P Power

05/20/2021

30s Second Chart Range

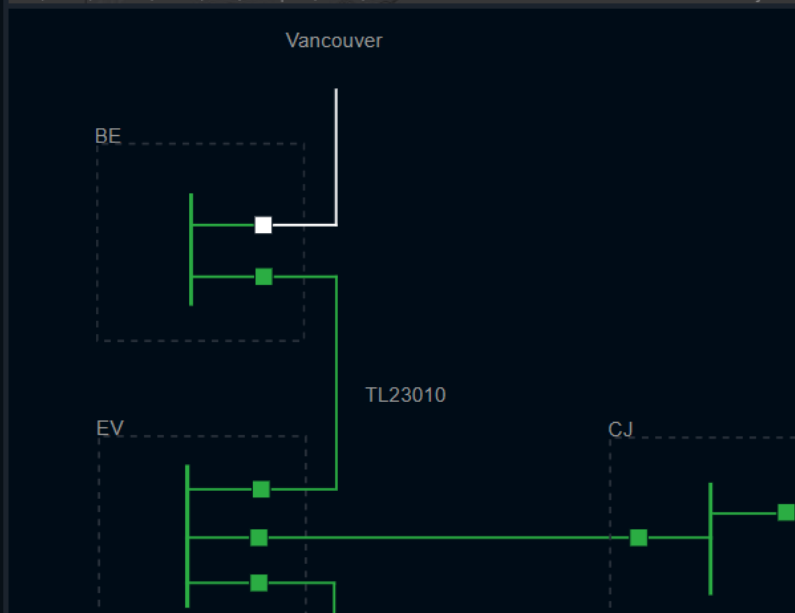
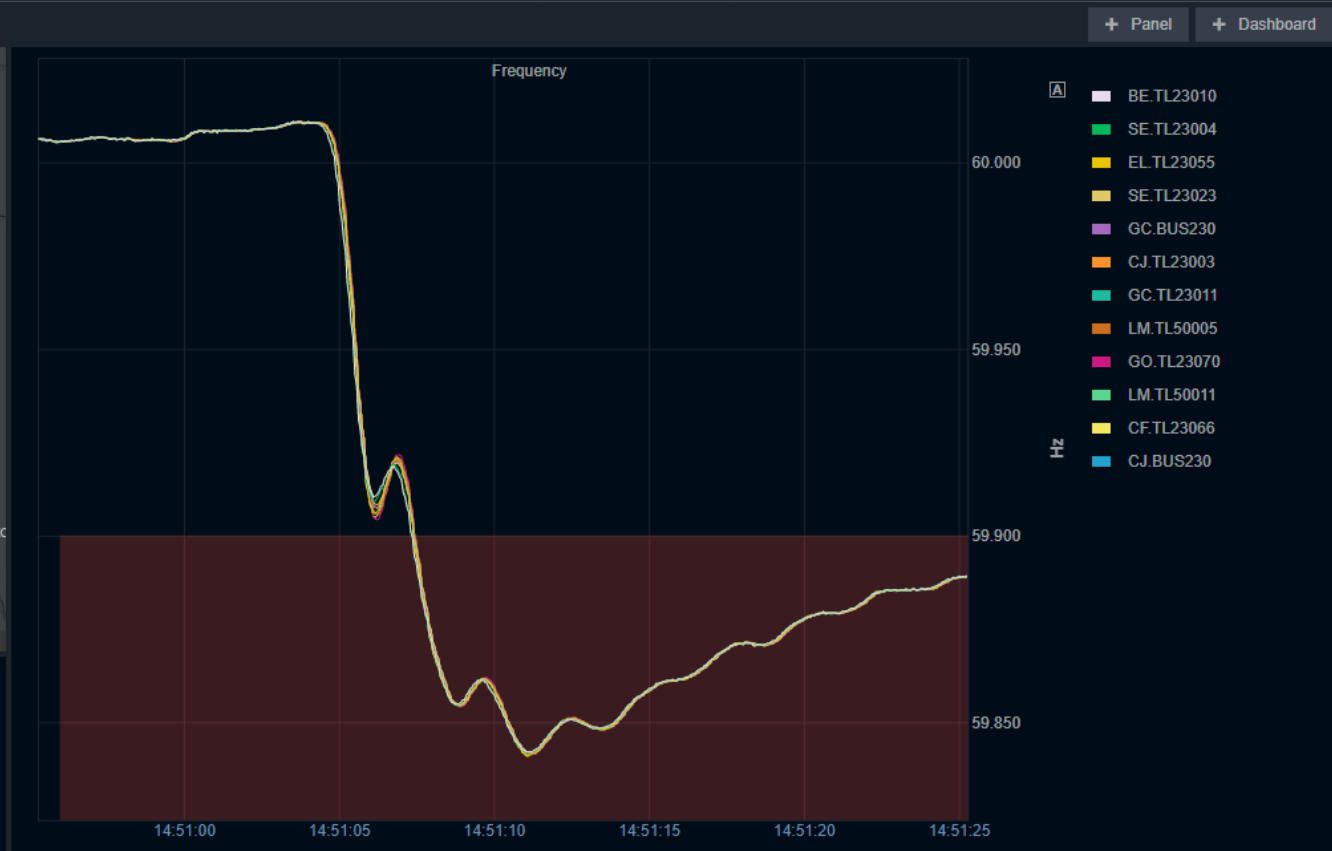
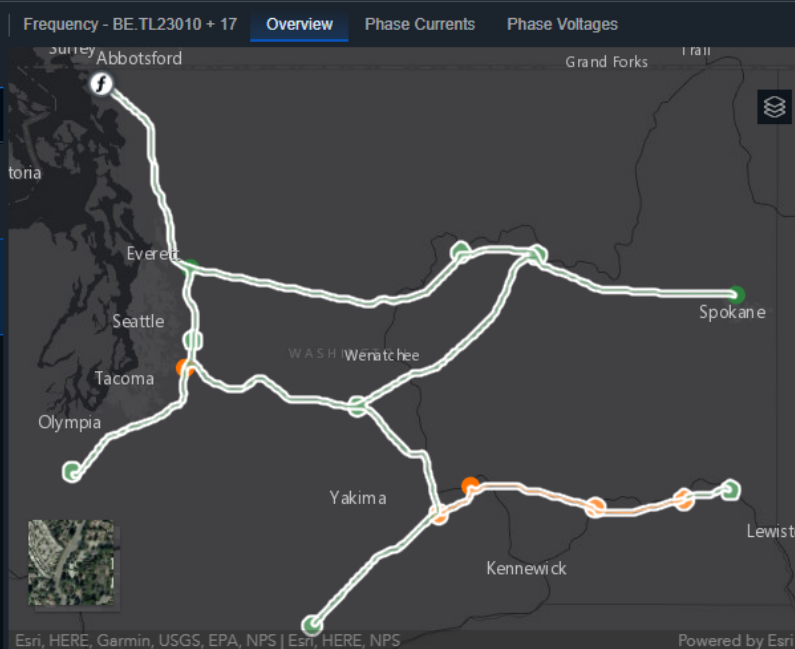
🔔 General 📈 Oscillation V Voltage 🔔 All

Notifications

All

Focused Shelved

- Oscillation - BCMODE + 1
14:51:18 - < 5 Seconds
High Alert (0.100)
- Frequency - BE.TL23010 + 17
14:51:07 - 20 Seconds
Low Alert (59.900)





See a **Live Demo** on Thursday at the SEL Sponsorship Presentation

- 15:00 Zagreb time
- 9:00 AM Eastern time
- 6:00 AM Pacific time